

The experience of the European Integrated Strategy for Social Inclusion and Social Protection (social OMC)

Is growth conducive to Social Inclusion?

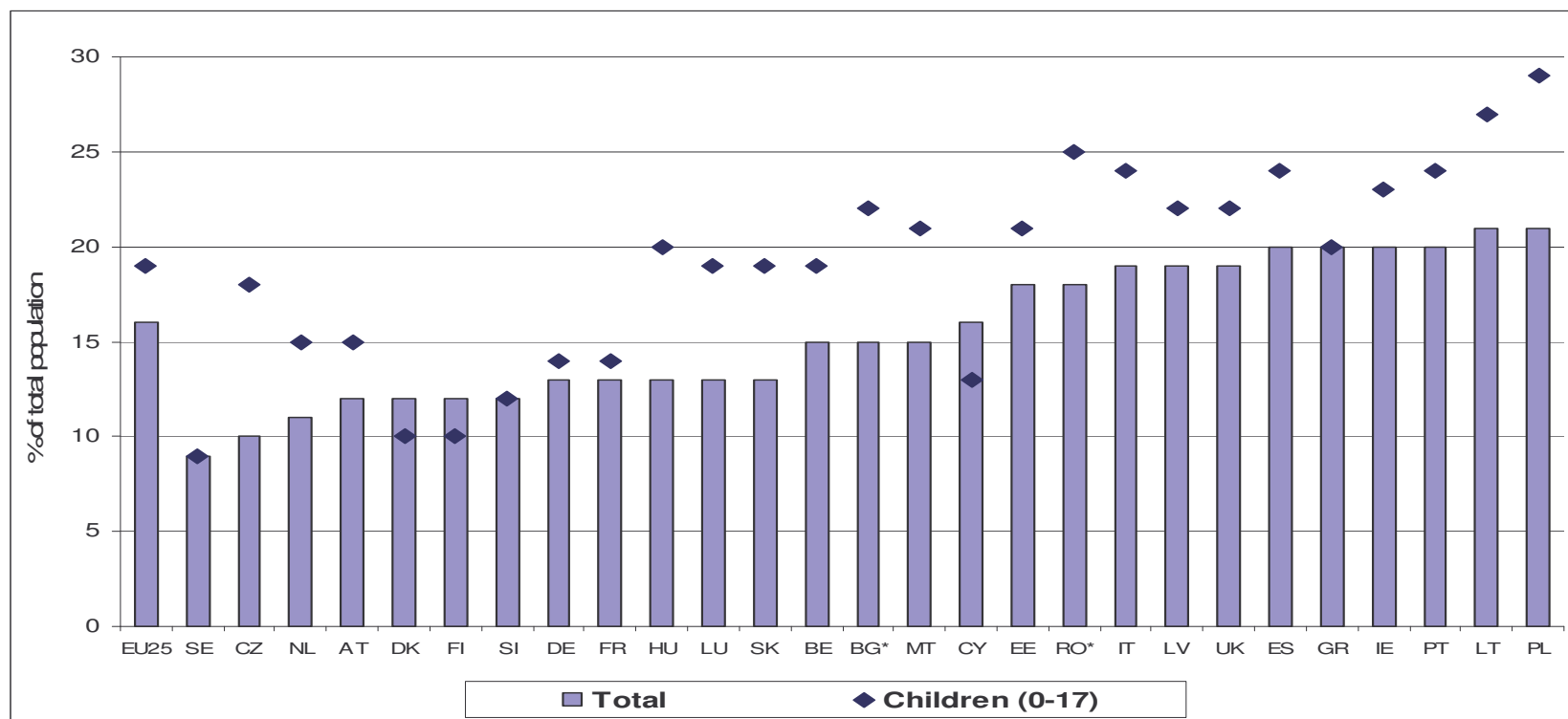
**Jérôme Vignon – DG Employment – European Commission
Conference « Beyond GDP » - 19-20 November 2007**

Overarching list of indicators for the EU strategy for social protection and inclusion

- 14 indicators to monitor 2 overarching objectives
 - Social cohesion and policies that contribute to it
 - Interaction between growth and jobs and social cohesion
- **Risk and intensity of poverty**
- **Income inequalities (S80/S20)**
- **Healthy life expectancy**
- **Early school leavers**
- **Jobless households**
- **Projected public social expenditure**
- **Pension adequacy**
- **Unmet need for health care**
- **Anchored poverty rate**
- **Employment rate of older workers**
- **In-work poverty risk**
- **Activity rates**
- **Dispersion in regional employment rates**
- ***More health***

At-risk-of poverty rate in the EU (%), total and children, income year 2004

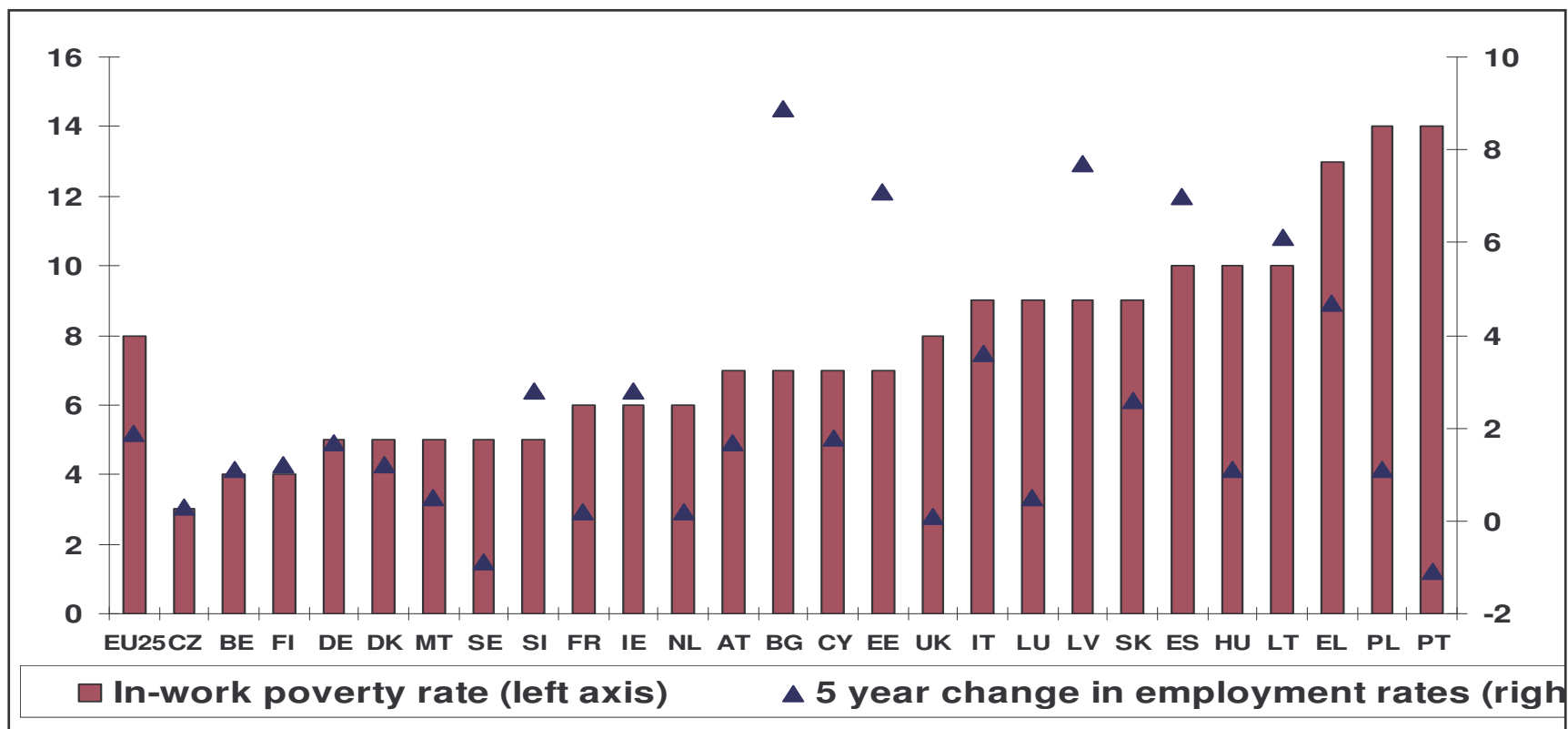
16% of Europeans and 19 % of children are at risk of poverty. Rates range from 9% to 29% for children.



Source: SILC(2005) - income year 2004 (income year 2005 for IE and the UK); except for BG and RO - estimates based on the national Household Budget Survey

In work poverty: at-risk-of-poverty rate of people in employment, 18+, income year 2004

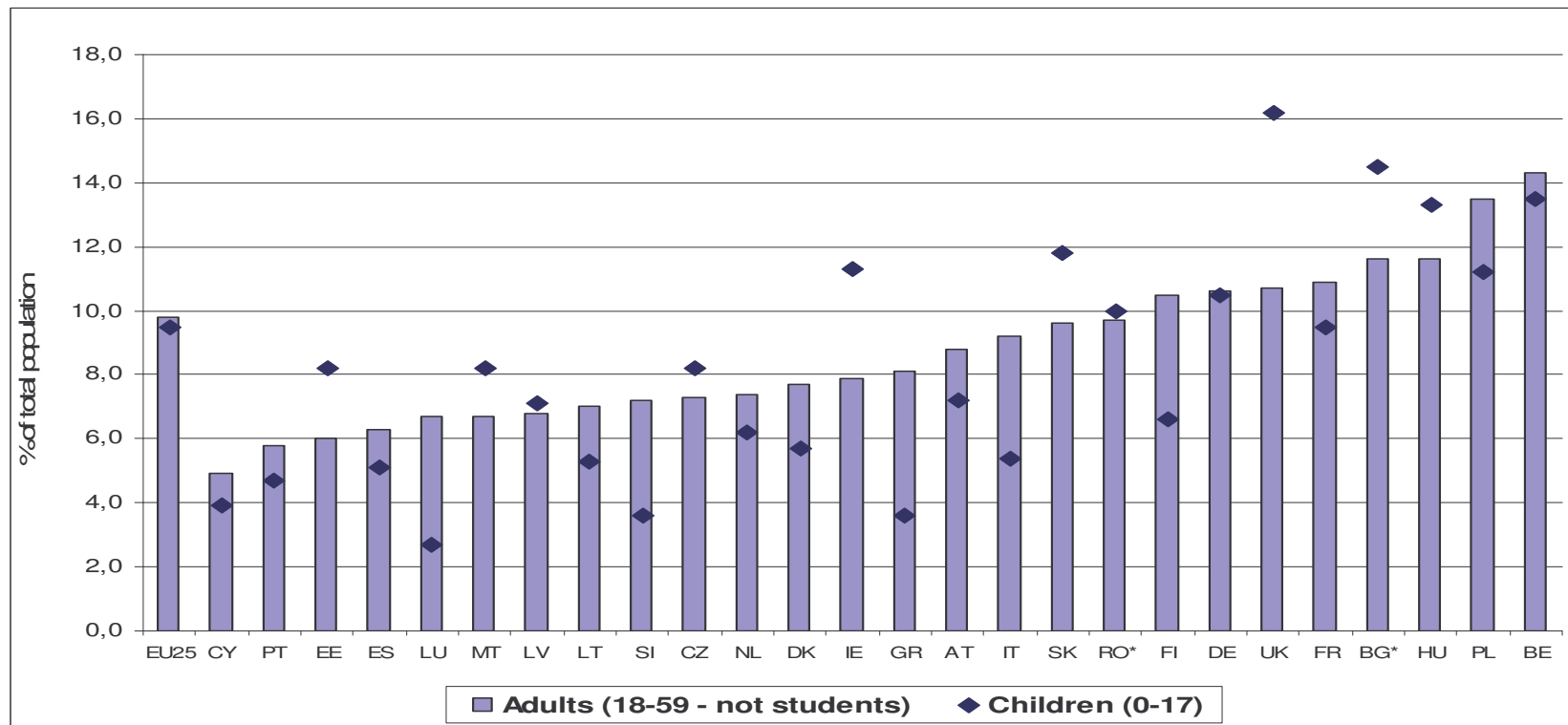
8% of working adults at risk of poverty, in-work poverty a concern even in countries that have raised employment



Source: SILC(2005) - income year 2004 (income year 2005 for IE and the UK); LFS

Adults and children living in jobless households, 2006

**10% of adults and children live in jobless households in EU;
no significant improvement since 2001**

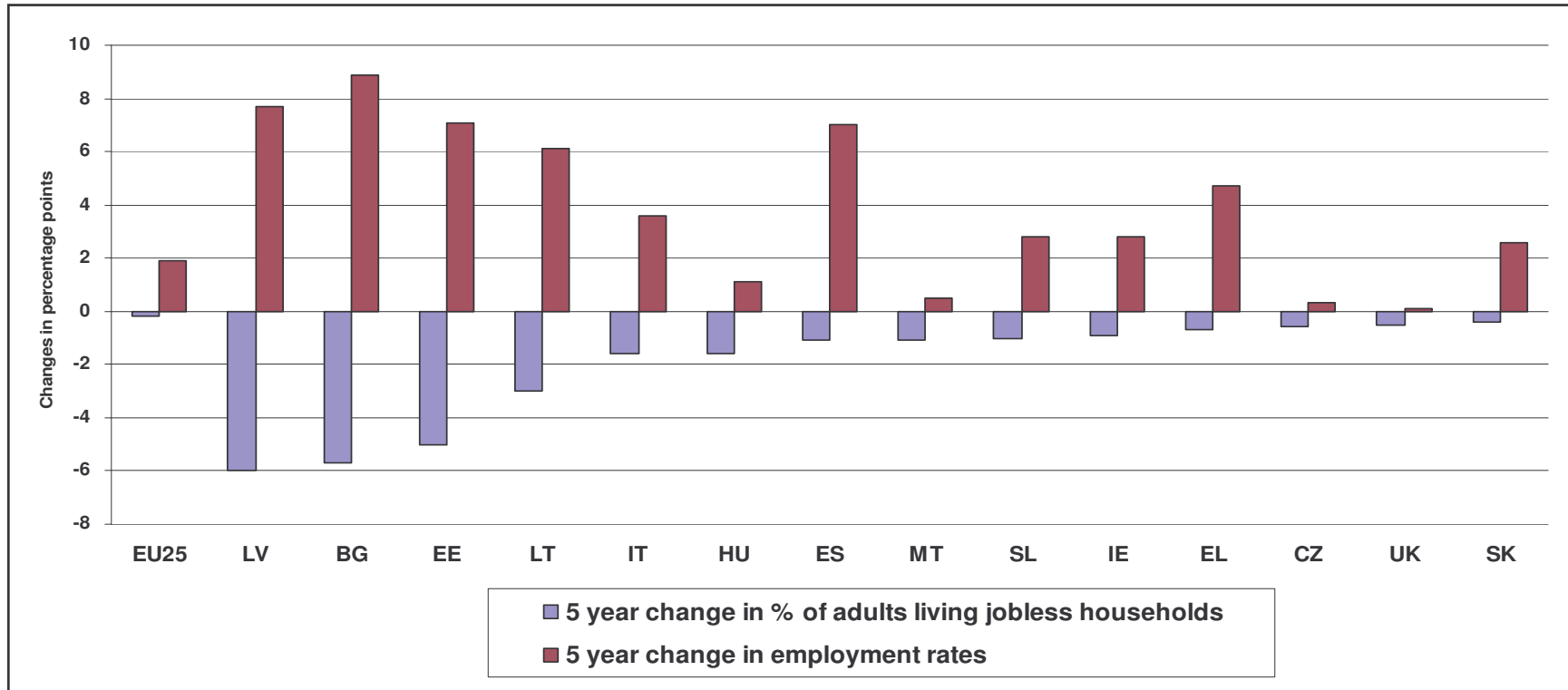


Source: Eurostat Labour Force Survey, spring results, data missing for SE

Impact of employment growth on people in jobless households

- 5 year changes between 2001 and 2006 -

In some countries, employment growth **HELPED** **DECREASING** the number of people in jobless households



Source: Eurostat Labour Force Survey, spring results

Impact of employment growth on people in jobless households - 5 year changes between 2001 and 2006 -

In other countries, employment growth had **NO IMPACT**
on the number of people in jobless households



Source: Eurostat Labour Force Survey, spring results